

Power Cycling the Energy Management Controller (EMC)

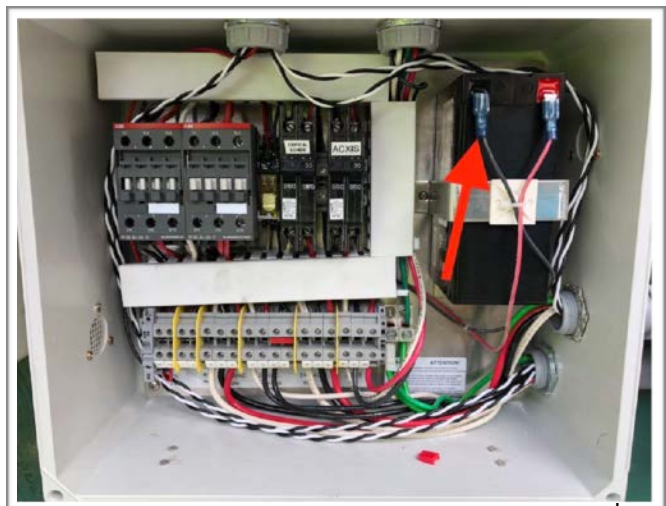
Sometimes the Energy Management Controller (EMC) loses the internet connection for various reasons. Most often it happens when the EMC loses internet connection for a prolonged period then tries to reestablished the connection.

The attached pictures should help with this simple procedure. Be aware that the EMC has two sources of power.

- 1) **Unplug the AC connection to the outlet in the main ACXIS box.**



- 2) **If your system includes an energy storage Automatic Transfer Switch (ATS), also unplug the black 12v DC battery backup lead in the lower ATS box.**



You will need to disconnect both, wait 10 seconds, then plug them back in (no particular order).